

 SILVERSEA®

TOKYO

C O N T R O T E M P O

NEW YORK

TIME TO SEE THE WORLD DIFFERENTLY
WORLD CRUISE 2025



TOKYO

C O N T R O T E M P O

NEW YORK

TIME TO SEE THE WORLD DIFFERENTLY
WORLD CRUISE 2025

TOKYO TO NEW YORK | 13 JAN - 29 MAY 2025
136 DAYS | 30 COUNTRIES | 59 DESTINATIONS



New York

Boston

Halifax

St John's

Nuuk

Qaqortoq

Isafjordur

Akureyri

Reykjavik

Tórshavn

Bergen

Oslo

Stockholm

Helsinki

Tallinn

Copenhagen

Hamburg

Amsterdam

Rouen

Saint Malo

Bordeaux

Bilbao

Lisbon

Cadiz

Malaga

Naples

Thessaloniki

Istanbul

Volos

Kusadasi

Rhodes

Nazareth (Haifa)

Jerusalem (Ashdod)

Transiting the Suez Canal

Ain Sukhna

Petra (Aqaba)

Luxor (Safaga)

Jeddah



Hiroshima
Beppu
Kagoshima

Osaka

Tokyo

Xiamen

Naha

Hong Kong

Ha Long Bay

Chan May (Hue/Da Nang)

Da Nang

Ho Chi Minh City

Phuket

Singapore

Chennai

Cochin

Colombo

Trincomalee

Mumbai



TIME TO SEE THE WORLD DIFFERENTLY

The time has come to board our newest ship, *Silver Dawn*, as we set sail on a voyage that explores the world off-season, off-tempo, and off the beaten path. We'll turn classic and iconic destinations on their head, as we call at 59 ports in 30 countries and four continents, with 19 new places our world cruises have never sailed to before. We'll see these places through the eyes of locals, as we unveil their authentic stories and secrets. And we'll access places you've never heard of. All for an exclusive look at the world, at sailing, at time itself.

CHAPTER

FROM TOKYO TO HONG KONG

1

SOUNDS OF THE FAR EAST



HONG KONG CITYSCAPE

In Controtempo, our world cruise begins before it begins, as guests can enjoy a pre-cruise tour featuring Japan's most iconic experiences. Then, we'll set sail to explore the cities, sights, sounds and tastes of the Far East, including Japan's "umami" — the fifth taste — a new flavour that has changed cuisines around the world, and part of our Sea And Land Taste (S.A.L.T.) programme on Silver Dawn.*



TOKYO (JAPAN) / 13 January

Feast your eyes on the spectacular blend of lights, sounds and temples that is Tokyo, as we begin a world cruise here for the very first time. We'll visit the capital of Japan inside and out, as we enjoy an unusual look at this megalopolis right in the heart of winter. We'll also see its more elegant side, with a welcome gala evening that kicks off our journey in style.



NAHA (JAPAN) / 22 January

A brand new world cruise destination awaits us at the heart of famed island Okinawa. Naha is a place way off the beaten path, a subtropical paradise of balmy weather, crystal waters and clear blue skies. It remains one of Japan's hidden gems and, as the once capital of the fascinating historical Ryukyu Kingdom, features a wealth of ancient sites to explore and get lost in.



XIAMEN (CHINA) / 24-25 January

For centuries the gateway to China, Xiamen is yet another new world cruise destination on *Controtempo*. A vibrant city, it beckons the curious traveller to explore its unique mix of the new and the old. Ancient temples look on as modern skyscrapers reach for the sky, and traditional restaurants go head to head against the latest in contemporary cuisine and modern locales.

CHAPTER

2

FROM HONG KONG TO SINGAPORE

FAST CITIES, SLOW VIBES



MARINA BAY WATERFRONT, SINGAPORE

Time moves at different rhythms here, as the second chapter of our voyage reveals the cities, traditions and cultures of South East Asia. We'll explore deep-rooted local traditions and modern eats in iconic places such as Ha Long Bay and Ho Chi Minh City in Vietnam. Faraway temples will give way to sprawling Asian cityscapes, as we bridge the millennia between today and yesterday.



HA LONG BAY (VIETNAM) / 29-30 January

We'll have the luxury of time as we spend an overnight at Ha Long Bay to enjoy the unspoilt nature of the Bay of Descending Dragons. Famous around the world for its thousands of towering limestone karsts surrounded by emerald-green waters, they're quite a sight to see, as many feature lush green rainforests right up top.



DA NANG (VIETNAM) / 31 January - 1 February

A two-day stay will give us the perfect opportunity to explore the area in and around Da Nang, including the city's many fantastic bridges. We'll wander the beautiful beaches of the region and embark on a discovery of the nearby legendary Imperial City of Hue, with its rich history and palaces, containing the tombs of emperors Tu Duc, Minh Mang and Khai Dinh.



HO CHI MINH CITY (VIETNAM) / 3-5 February

A timeless Vietnamese icon, Ho Chi Minh City is the other city that never sleeps. We'll enjoy three whole days and two overnights here, for an in-depth look at this immense sprawling megacity that once functioned as a travel and trade hub for centuries, bringing together people from far-flung places around the world. It still does.

EXCLUSIVE WORLD CRUISE EVENT

SPIRIT OF THE CHAM



MY SON SANCTUARY, HOW AN, VIETNAM

1 FEBRUARY 2025 - DA NANG (VIETNAM)

Take a journey to a different time at the *My Son Sanctuary*, a mountain community truly off the beaten path. We'll follow Members of the Cham – a peoples at the crossroads of Islamic and Hindi cultures – as they guide us through incredible and majestic ruins to a lively dining experience under the stars.

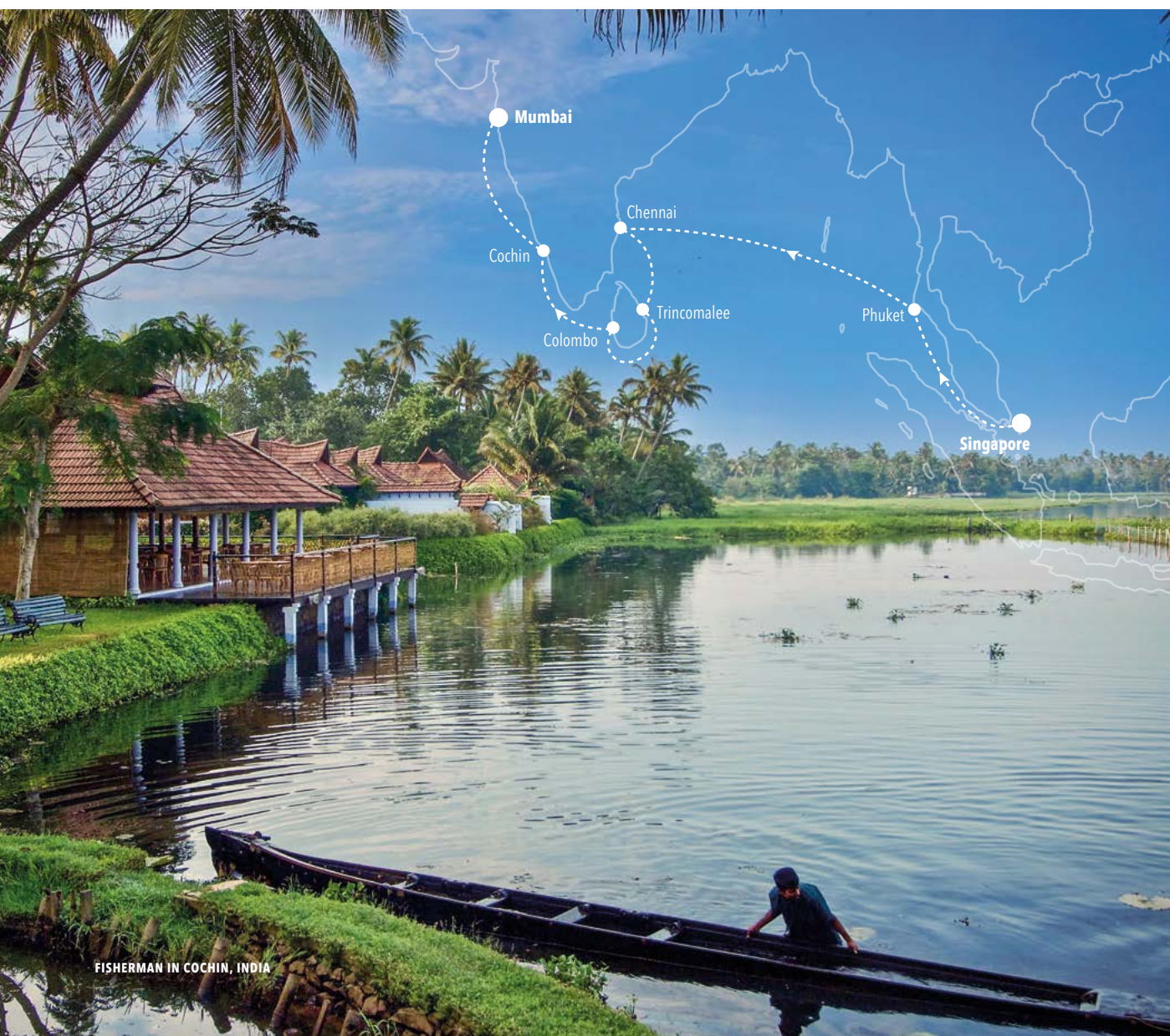


CHAPTER

FROM SINGAPORE TO MUMBAI

3

A TEMPO FROM A DIFFERENT TIME



FISHERMAN IN COCHIN, INDIA

*We'll rediscover age-old Asian traditions in Singapore, Thailand, India and Sri Lanka, as we visit the rhythms of the past. In true Controtempo style, you'll be able to enjoy a unique onshore experience that takes you off the beaten path by rail, as you meander through lush green rainforests and picturesque landscapes on the Eastern & Oriental Express.**



CHENNAI (INDIA) / 14-15 February

One of the most iconic cities in India, Chennai welcomes us for two entire days, as we experience authentic Tamil culture, rich in extraordinary cuisine, history and architecture. Modern-day cosmopolitan lifestyles cross paths with religious shrines large and small, as well as beautiful long stretches of beach. A city rich in character that simply begs to be explored.



TRINCOMALEE (SRI LANKA) / 16-17 February

As we approach Trincomalee, time takes on a whole new dimension, as centuries-old Portuguese fortifications reveal temples and shrines that are more than two thousand years old. Panoramic views abound as this natural harbour embraces fantastic beaches and emerald green waters, as well as promenades where you can find statues and monuments of all eras.



MUMBAI (INDIA) / 23-24 February

It's finally time to return to Mumbai, as we haven't visited this enticing destination with a world cruise for years. From street vendors to high-street shops, traditional cuisine to experimental fare, Mumbai has it all. Fast and slow, the capital of Indian culture is a place of contrasting melodies that come together in harmony, ready for you to go out and experience it at your own tempo.

EXCLUSIVE WORLD CRUISE EVENT

SINGAPORE: A BIRD'S EYE VIEW



AERIAL VIEW OF SINGAPORE

7 FEBRUARY 2025 - SINGAPORE (SINGAPORE)

Get a bird's eye view of Singapore as you enjoy a 360° look at the dazzling skyline with private access to the SkyPark Observation Deck of the Marina Bay Sands Hotel right in the heart of the city. Sip on a Singapore Sling and enjoy gourmet food from the city's street markets, 57 stories up.



EXCLUSIVE WORLD CRUISE EVENT

BOMBAY: CITY OF DREAMS



INDIAN DANCE PERFORMANCE

23 FEBRUARY 2025 - MUMBAI (INDIA)

Experience Hollywood and Bollywood together, as you witness the ultimate love story set in the city of dreams: Mumbai. Join us on a musical journey at an exclusive venue, as you dine the night away and watch an epic Hindi romance unfold through song, dance, music and more.



CHAPTER

4

FROM MUMBAI TO ISTANBUL

THE SANDS OF TIME



FRONT OF AL-KHAZNEH IN PETRA, JORDAN

There are moments in history when humans managed feats beyond their time, to create architecture, art and meaning in an entirely new way that even now seems like it was magic. Fortunately, the sculpted monuments of Petra and the incredible structures of Luxor are still here for us to explore today. After a hiatus, we return to Egypt with our world cruise, and then we'll visit Israel after crossing the famed Suez Canal.



JEDDAH (SAUDI ARABIA) / 2-3 March

A city that straddles two worlds of time, Jeddah features seventh century architecture and homes built out of coral alongside modern promenades, resorts and shopping malls. A historic crossroads of tribes, traders and pilgrims, this magnificent city is the traditional gateway to Mecca, and yet has a modern heart that beats to the tune of international culture and cuisine.



LUXOR (EGYPT) / 6-7 March

Often called the world's greatest open-air museum, Luxor is a site to behold. Bright orange temples and columns are set against the bluest of skies, as the sheer size of these monuments is indescribable; they simply must be seen. The ancient capital of the Egyptian pharaohs, it features structures more than 3,400 years old, standing at attention, waiting to be explored.



JERUSALEM (ISRAEL) / 10 March

An ancient mythical city full of beauty and secrets, Jerusalem reveals itself slowly to the travellers eye, as its narrow streets and alleyways go up and down, left and right, and open up onto large squares, the building blocks of history and time itself. A labyrinth of stories, peoples and cultures, it begs to be discovered and rediscovered.

EXCLUSIVE WORLD CRUISE - OVERLAND PROGRAMME

IN THE FOOTSTEPS OF THE PHARAOHS



THE PYRAMIDS AND THE GREAT SPHINX OF GIZA, EGYPT

8-9 MARCH 2025 - AIN SUKHNA (EGYPT)

Unlock Egypt's ancient secrets as you witness the might and magic of the pharaohs at sites in and around Cairo. Exclusive experiences await you: from a private tour of the Abdeen Presidential Palace to close-up views of the pyramids to exclusive access to the Grand Egyptian Museum.



CHAPTER

FROM ISTANBUL TO NAPLES

5

WHERE THE PAST DANCES



Naples

Thessaloniki

Istanbul

Volos

Nafplion

Siracusa

ORTIGIA ISLAND IN SYRACUSE, ITALY

The Mediterranean sun rises to reveal medieval treasures, millennial towns, and cities that can each claim to be the cradle of civilisation. Thousands of years of history in places like Istanbul, Nafplion, Siracusa and Naples have made the world what it is today. With brand new destinations like Thessaloniki and Volos, this chapter is a novel way to explore the past and enjoy the present.



ISTANBUL (TURKEY) / 16-17 March

The thread connecting east and west, Istanbul brings together many waterways, bridges, neighbourhoods, and peoples. A crossroads for millennia, we'll discover how time moves at different speeds on its European side and its Asian side as we experience a Turkish bath and explore the famed Grand Bazaar. We'll have ample time for both, thanks to our overnight in this ancient modern city.



VOLOS (GREECE) / 20 March

The quintessential small Greek village, Volos is a brand new Silversea destination and embraces several important archaeological sites. Our gateway to exploring the incredible rock formations of Meteora, we'll also be able to explore Greece's oldest acropolis, Sesklo, a site that dates back to the Neolithic Era and has welcomed people to its lands for close to 10,000 years.



NAFPLION (GREECE) / 21 March

Before Athens took over in 1834, Nafplion was the first capital of Greece. The many layers of this magical romantic seaside town can be seen in its not one, not two, but three large castles. The oldest, Akronafplia, was built by different peoples over the epochs. A village in its own right until the 13th century, its mystique lives on, as you admire the city below from its vast ramparts above.

CHAPTER

FROM NAPLES TO LISBON

6

THEMES OF THE MEDITERRANEAN



THE PRAÇA DO COMÉRCIO IN LISBON, PORTUGAL

The Mediterranean is all about taking it slow, with a pleasant tempo that allows us to enjoy its seaside cafés, lively trattorias, and spectacular beaches, just that little bit longer. Enjoy the perfect espresso or cappuccino as you look out at the Gulf of Naples, a first time destination for a Silversea World Cruise, before you take in the breeze coming off the Atlantic Ocean in Cádiz and Lisbon.



NAPLES (ITALY) / 25-26 March

There's nothing like the fresh scent of a *pizza margherita* just pulled out of a wood-burning oven in the centre of Naples, or an espresso placed in front of you at one of the many cafés lining its iconic and busy streets. Thanks to a precious overnight stay, we'll have all the time we need to explore the city's ancient ruins, royal palaces and castles, most of them within walking distance.



MÁLAGA (SPAIN) / 29-30 March

A uniquely multi-layered city, the old town of Málaga opens up onto Calle Marqués de Larios' high street boutiques, cutting-edge restaurants, lively tapas bars and bustling outdoor cafés. We'll have a great time exploring the city that gave us Picasso – he was born here – and its magnificent museums, cathedral and seaside promenade.



CÁDIZ (SPAIN) / 31 March - 1 April

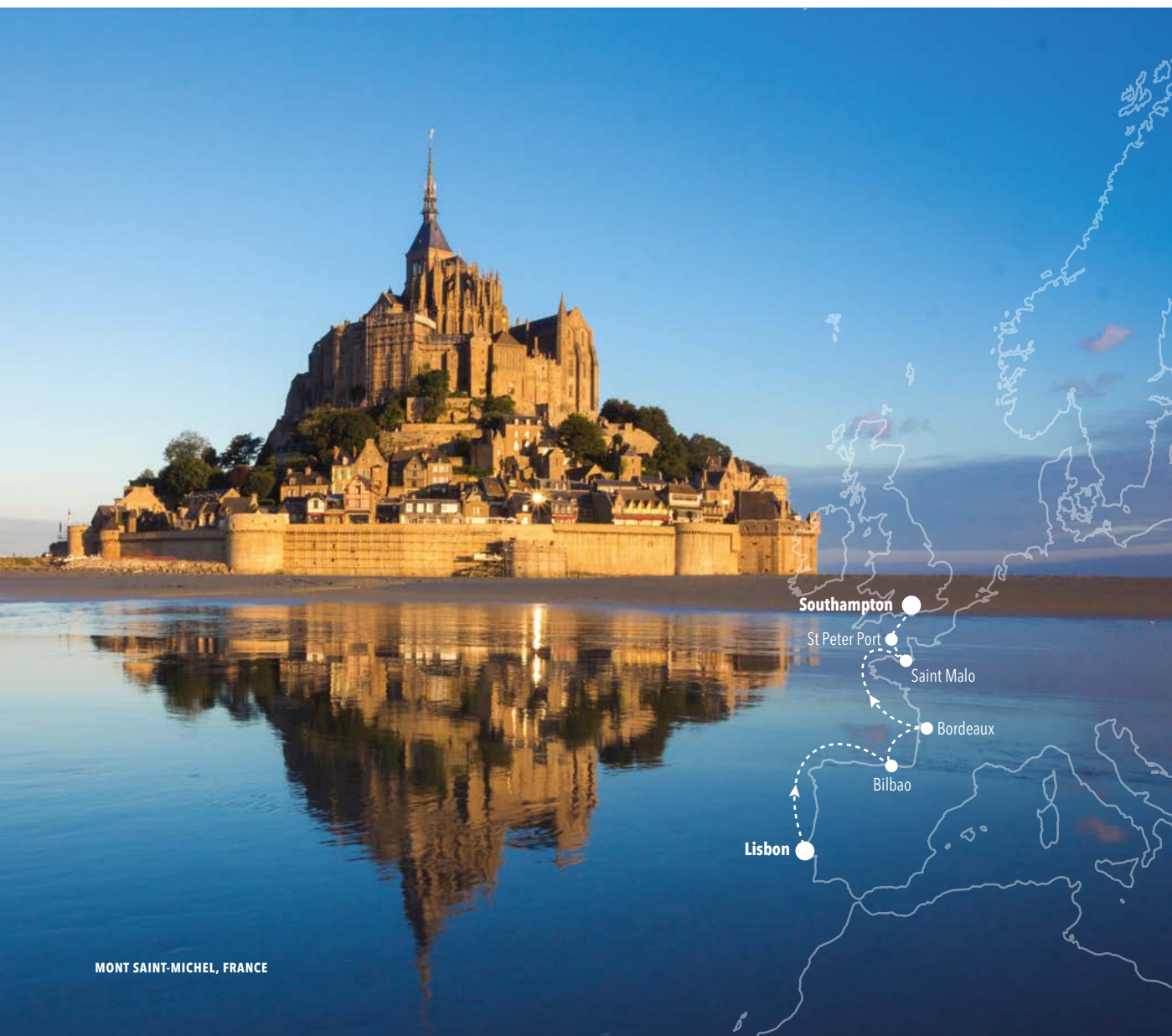
Though Cádiz has all the charm of the Mediterranean, something begins to shift as we approach the city and the coasts of the Atlantic Ocean: the winds, temperatures and character of the land changes before our very eyes. This city's unique architectural heritage features both Roman amphitheatres and neo-classical cathedrals, for a unique look at Spain.

CHAPTER

7

FROM LISBON TO SOUTHAMPTON

A COASTAL MOTIF



MONT SAINT-MICHEL, FRANCE

The western coast of the Atlantic Ocean takes Controtempo in a brand new direction, as it welcomes us with a unique range of iconic historical cities like Lisbon and Bordeaux, alongside small hidden gems like Saint-Malo and Saint Peter Port. Nature comes to life as we sail by remote hillsides and through open waters, from where we'll be able to admire the coasts of Europe from a new, and different, perspective.



LISBON (PORTUGAL) / 2-3 April

Springtime is when Lisbon is at its best, as locals come out to enjoy the tourist off-season, and temperatures during the day are pleasant. The city's seven hills are criss-crossed by cobblestone alleyways and pastel-coloured homes with bright tiles that burst into a million shades at sunset. Small restaurants feature live Fado music and some of the most flavourful dishes in all of Europe.



BORDEAUX (FRANCE) / 6-8 April

We'll spend three days in Bordeaux to learn the region's secrets, as we take the time to explore the world's largest urban World Heritage Site, home to numerous fine vineyards and vivid examples of the best in French culture and cuisine. We'll enjoy private tastings of the area's famous full-bodied reds and get to know the local wine producers and their stories.



ST PETER PORT (GUERNSEY) / 11 April

A stunning new world cruise destination, St Peter Port gives us a unique look at the Channel Islands. A rarely visited off-the-beaten-path jewel, it will immerse us in natural landscapes that go on forever – from beaches that never end, to rugged cliffs overlooking breath-taking panoramas stretching as far as the eye can see – along with an unusual history of castles and seaside fortresses.

CHAPTER

8

FROM SOUTHAMPTON TO STOCKHOLM

RHYTHMS OF THE NORTH



THE OLD TOWN OF STOCKHOLM, SWEDEN

As we sail for the cities on the North and Baltic coasts, we'll explore several architectural and natural wonders. We'll also discover a unique, offbeat culinary tradition enjoyed across Scandinavia — from Stockholm's old town to Copenhagen's canals — the “art of fermentation”. We'll explore this fascinating technique in our S.A.L.T. program as you try it hands on and taste the results. Velbekomme!



ROUEN (FRANCE) / 13-15 April

As you walk the cobblestoned streets of Rouen, you'd be forgiven for thinking you've gone back in time to the Middle Ages. With several stand-out Gothic churches, medieval half-timbered houses in a variety of primary colours, and a skyline dominated by the spires of its Cathédrale Notre-Dame, you can easily see why Impressionist Claude Monet used it as inspiration for many of his paintings.



COPENHAGEN (DENMARK) / 23-24 April

Several cities in the world are considered the “happiest,” but none so often as Copenhagen. The Scandinavian capital with a small-town heart, it features stunning modern architecture alongside centuries-old canals. Renowned for its New Nordic cuisine and Michelin-starred restaurants, its blend of traditional gourmet, fermentation techniques and modern experimentation is second to none.



TALLINN (ESTONIA) / 27-28 April

At the eastern edge of the Baltic Sea, Tallinn is as off-the-beaten-path as you can get. Multi-coloured rooftops hint at the culturally vibrant and lively city below. A mix of histories lasting over a millennia, the city features a colourful 13th-century Gothic Town Hall in the main square and yet it boasts the highest number of start-ups per person among all European countries.

EXCLUSIVE WORLD CRUISE - OVERLAND PROGRAMME

AN EVENING WITH MARIE ANTOINETTE



THE ENTRANCE TO THE PALACE OF VERSAILLES, FRANCE

14-15 APRIL 2025 - ROUEN (FRANCE)

A gala evening and dinner at the 17th-century Palace de Versailles with Marie Antoinette holding court may seem like something from a dream. *Mais non!* With *Controtempo* we go back in time for an evening of dance, elegance and indulgence to meet the last Queen of France.



CHAPTER

FROM STOCKHOLM TO REYKJAVIK

9

A MELODY OF FIRE AND ICE



GODAFOSS WATERFALL NEAR AKUREYRI, ICELAND

As we bid adjö to Stockholm, we'll say Hallo to a vast range of Nordic cultures. We'll experience all the history, architecture and cuisine of hidden and charming cities like Bergen and Tórshavn, and iconic capitals Oslo and Reykjavik. We'll also take the time to explore Iceland's magical landscapes of unspoilt waterfalls, immense glaciers and fascinating geysers to uncover the island's most hidden secrets.



OSLO (NORWAY) / 3-4 May

Oslo vibrates with the excitement of a modern frontier. It's a place where time bounces back and forth between tomorrow and yesterday, as traditional maritime history is celebrated alongside trendy art galleries and neighbourhood cafés where the barista knows your name. Thanks to our exclusive overnight, we'll have the luxury of taking in all the spirit and character of this hip Nordic city.



BERGEN (NORWAY) / 6 May

Sognefjord, Norway's longest fjord, leads you all the way to Bergen, a magnificent city surrounded by mountains, water and more mountains. We'll discover its unique heritage as we explore the beautifully preserved traditional wooden houses of Bryggen, a protected UNESCO World Heritage site that brings you way back to another time.



TÓRSHAVN (FAROE ISLANDS) / 8 May

We'll visit one of the smallest capitals in the world right at the heart of the Faroe Islands, Tórshavn, a brand new world cruise destination. This incredibly remote archipelago of immense natural beauty, long-time traditions and unique food culture – featuring dishes such as fermented lamb and stewed rhubarb – is full of quaint villages where everyone knows each other; a true northern paradise.

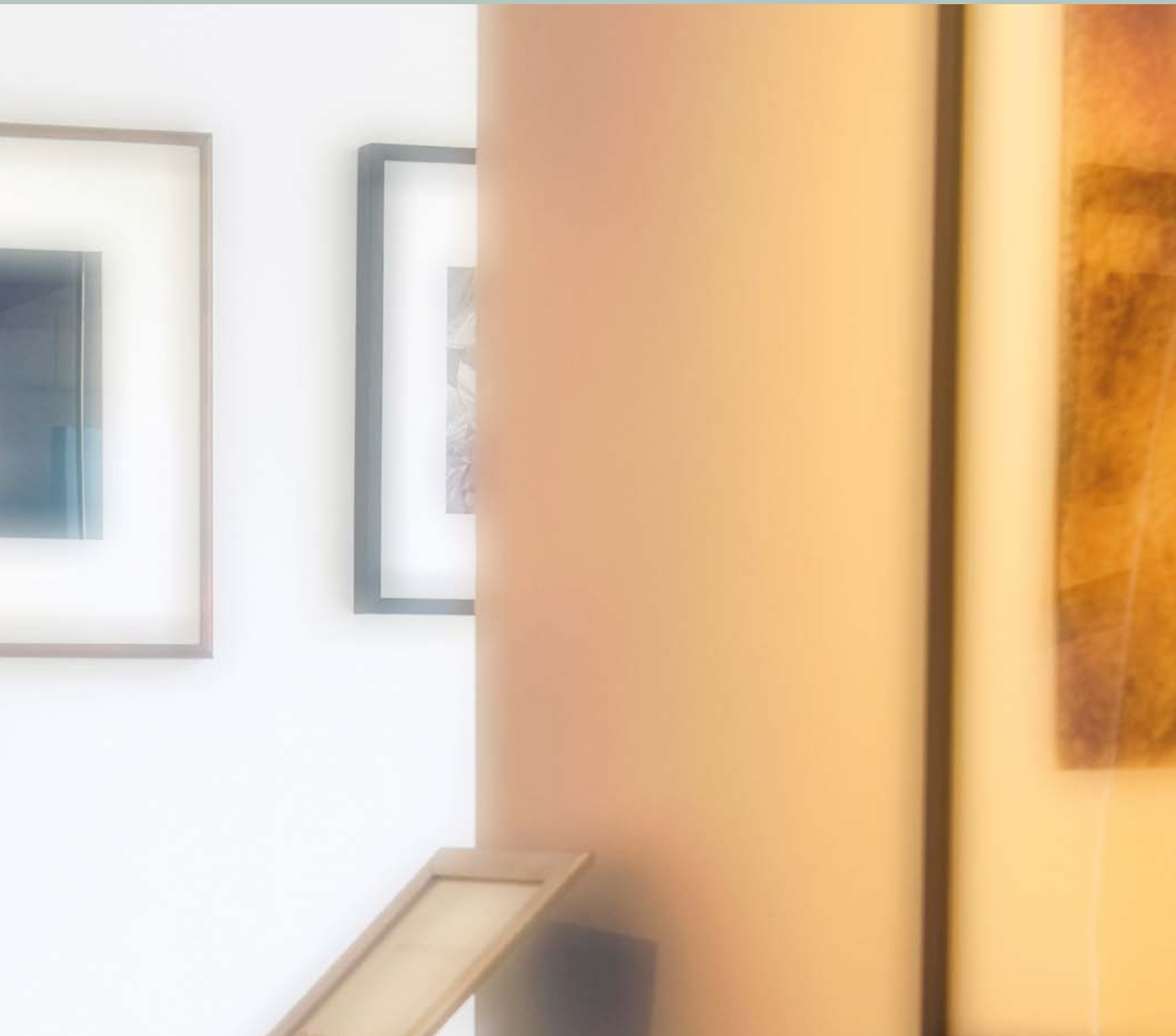
EXCLUSIVE WORLD CRUISE EVENT

THE WORLD THROUGH OUR EYES



29 APRIL 2025 - STOCKHOLM (SWEDEN)

If a picture is worth a thousand words, this event is worth a million. In stunning Stockholm, we'll enjoy a photo exhibit created just for us: "The World Through Our Eyes". A journey featuring faces, places and more, it'll be accompanied by a dinner curated by up-and-coming Scandinavian chefs.

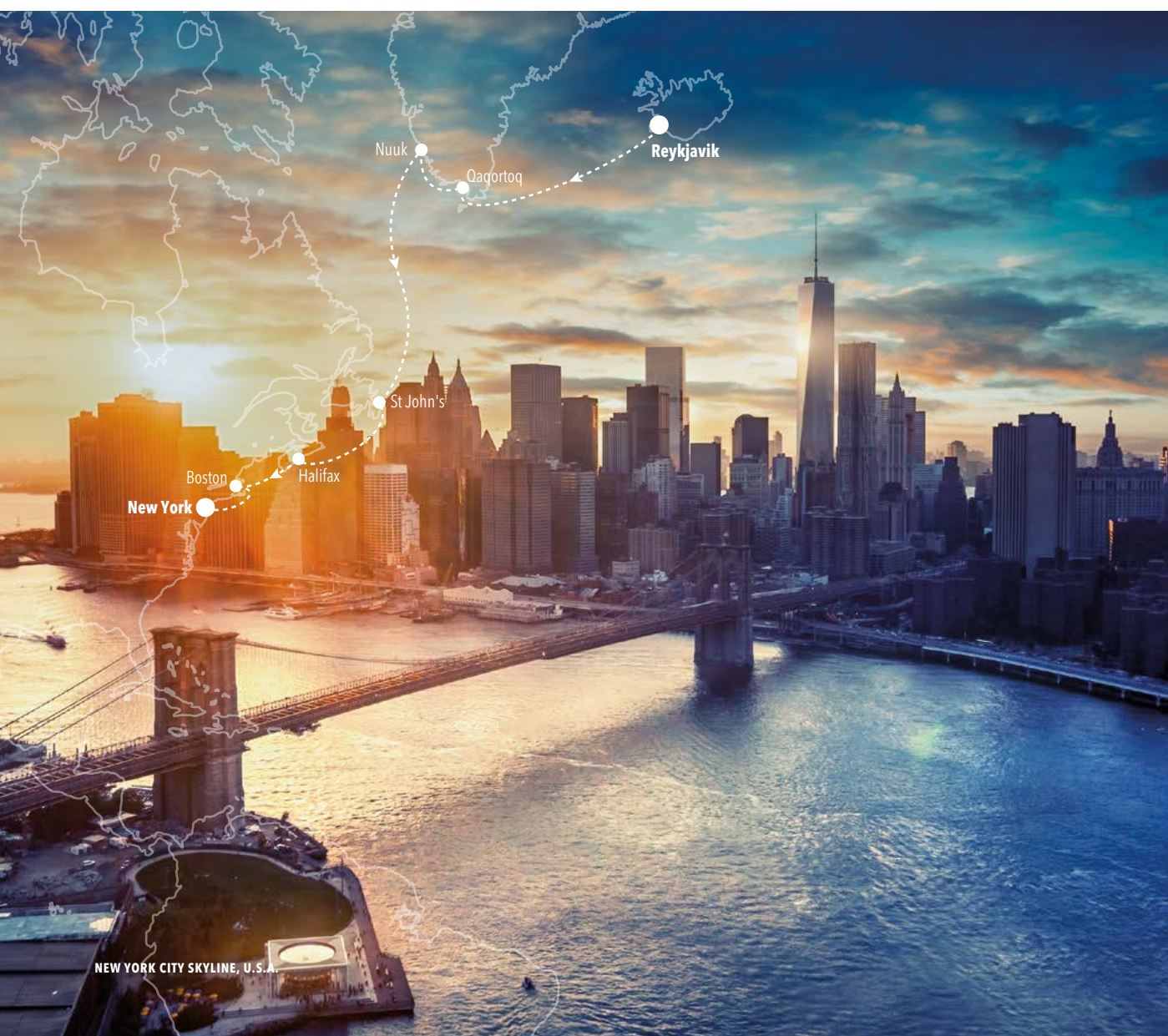


CHAPTER

FROM REYKJAVIK TO NEW YORK

10

THE GRAND FINALE



The final movement of Controtempo is a grand crescendo that brings together one of our most remote new destinations, Greenland, with the buzz and legendary character of the Big Apple, the original city that never sleeps, New York City. We'll get there by the way of the Canadian East, with an optional overland tour to off-the-beaten-path Prince Edward Island, a destination few travellers ever get to see.



NUUK (GREENLAND) / 17-18 May

With a tempo all its own, the capital of Greenland is a mythical place. Locals will reveal to us the fascinating stories of Greenlandic and Inuit history, as passed down to them for generations. Our overnight allows us to really take our time and soak in this remote town's unique character, as well as explore the stunning nature and wildlife all around it.



ST JOHN'S (CANADA) / 21-22 May

One of North America's oldest settlements, St John's is the capital of the island of Newfoundland, Canada's very own Far East. Our overnight in this friendly city opens us up to natural wonders beyond imagination, as they stretch out west across the island for miles. An outpost for many centuries, St John's welcomes us as it has always welcomed travellers from all over the world.



BOSTON (USA) / 26-27 May

Staying overnight in Boston means fully enjoying one of the most liveable cities on the continent, with its oceanside promenades facing a scattering of green islands as they form an archipelago before reaching out to the open Atlantic Sea. One of North America's oldest cities, we'll explore its special heritage through the arts of music, theatre and more.

EXCLUSIVE WORLD CRUISE EVENT

AN ICONIC MUSICAL FAREWELL



26 MAY 2025 - BOSTON (USA)

We'll end *Controtempo* on a high note, with a farewell made of music, joy and memories. We'll go on a musical journey around the world through an 80-minute concert that will inspire us and make our time together unforgettable. Created just for us, for this one night only. A true grand finale.



Our exclusive WORLD CRUISE COLLECTION

Enjoy a selection of bespoke shore excursions

Time is at the heart of these shore excursions* that take you deeper into the places we visit. Take a long pause and indulge in a Japanese hot spring spa experience. Or take advantage of the best time to see brightly coloured tulips the moment they bloom in The Netherlands. Or enjoy a timeless performance by a star folk musician in Halifax, Canada. Whatever your choice, these curated experiences will enrich your knowledge, and your spirit, in perfect *Controtempo*.

*optional experiences (surcharges apply)



HOT SPRINGS IN BEPPU, JAPAN

JAPANESE-STYLE HOT SPRINGS

29 JANUARY 2025

Beppu

Steam rises around you as your muscles relax and the last tensions of everyday life melt away. You'll feel yourself again, as an expert in relaxation guides your spa experience at the stunning hot springs of the Onsen Spa Resort.



TULIPS BLOOMING NEAR AMSTERDAM, THE NETHERLANDS

FLOWER BLOOMING AT ITS BEST

17 APRIL 2025

Amsterdam

Mid-April is the best time to watch bright tulips bloom in The Netherlands, as a 3rd-generation grower tells you the story of how they go from bulb to flower. Then, grab that perfect selfie surrounded by endless seas of tulips, daffodils and hyacinths.



FRESH OYSTER DINNER WITH CHAMPAGNE

JIMMY RANKIN KITCHEN PARTY

24 MAY 2025

Halifax

Cuisine, culture and music come together as we begin with a luxurious champagne raw bar and five-star tasting menu curated by Chef Anthony Walsh. We'll end with an evening of Canadian folk music by star Jimmy Rankin, as he performs just for us.

Our exclusive PROGRAMMES ON LAND

Discover our selection of bespoke onshore tours

We've curated a series of land-based programmes designed to give you bespoke experiences that take you to the heart of your destination. Go off the beaten path in Japan to meet Snow Monkeys in their unusual habitat, a national park's hot springs. In Southeast Asia, climb aboard the Eastern & Oriental Express luxury train, for a rail journey like no other. And in Canada, come face to face with a real character from the past, Prince Edward Island's Anne of Green Gables.



"SNOW MONKEYS" IN JAPAN

SNOW MONKEYS
PRE-CRUISE EXPERIENCE
Tokyo

Come face to face with Joshinetsu Kogen National Park's most famous residents, the Japanese macaques. These are the only monkeys in the world who enjoy soaking in hot springs – a behaviour they learned from us.



KHWAE YAI RIVER IN KANCHANABURI, THAILAND

EASTERN & ORIENTAL EXPRESS
8-10 FEBRUARY 2025
Singapore

Enjoy superlative service and lavish finishings on a luxury train from the same stable as the famed Orient Express, as you admire picturesque landscapes going by from the Observation Car and explore remote parts of Malaysia and Thailand.



PRINCE EDWARD ISLAND, CANADA

THE WONDERS OF P.E.I.
22-24 MAY 2025
St John's

Explore historic Charlottetown, the capital of Prince Edward Island, as you enjoy scenic waterfront views and visit the island's most famous resident of another time, Anne of Green Gables, with a private tour by a *Parks Canada* host.

MONDAY, 13 JANUARY 2025, EMBARK SILVER DAWN

DATE	PORTS	ARRIVE	DEPART
CHAPTER 1			
13 Jan	TOKYO		23:00
14 Jan	DAY AT SEA		
15 Jan	OSAKA	08:00	☾
16 Jan	OSAKA		23:00
17 Jan	DAY AT SEA		
18 Jan	HIROSHIMA	08:00	23:00
19 Jan	BEPPU	08:00	16:00
20 Jan	KAGOSHIMA	09:00	23:00
21 Jan	DAY AT SEA		
22 Jan	NAHA	08:00	16:00
23 Jan	DAY AT SEA		
24 Jan	XIAMEN	08:00	☾
25 Jan	XIAMEN		13:00
26 Jan	HONG KONG	09:00	☾
CHAPTER 2			
27 Jan	HONG KONG		21:00
28 Jan	DAY AT SEA		
29 Jan	HA LONG BAY	08:00	☾
30 Jan	HA LONG BAY		13:00
31 Jan	CHAN MAY (HUE/DA NANG)	08:00	23:59
01 Feb	DA NANG	08:00	23:59
02 Feb	DAY AT SEA		
03 Feb	HO CHI MINH CITY	12:00	☾
04 Feb	HO CHI MINH CITY		☾
05 Feb	HO CHI MINH CITY		13:00
06 Feb	DAY AT SEA		
07 Feb	SINGAPORE	07:00	☾
CHAPTER 3			
08 Feb	SINGAPORE		23:00
09 Feb	DAY AT SEA		
10 Feb	PHUKET	08:00	☾
11 Feb	PHUKET		13:00
12 Feb	DAY AT SEA		
13 Feb	DAY AT SEA		
14 Feb	CHENNAI	08:00	☾
15 Feb	CHENNAI		18:00
16 Feb	TRINCOMALEE	13:00	☾
17 Feb	TRINCOMALEE		23:00
18 Feb	DAY AT SEA		

19 Feb	COLOMBO	08:00	23:00
20 Feb	DAY AT SEA		
21 Feb	COCHIN	08:00	18:00
22 Feb	DAY AT SEA		
23 Feb	MUMBAI	08:00	☾
CHAPTER 4			
24 Feb	MUMBAI		18:00
25 Feb	DAY AT SEA		
26 Feb	DAY AT SEA		
27 Feb	DAY AT SEA		
28 Feb	DAY AT SEA		
01 Mar	DAY AT SEA		
02 Mar	JEDDAH	09:00	☾
03 Mar	JEDDAH		18:00
04 Mar	DAY AT SEA		
05 Mar	PETRA (AQABA)	08:00	18:00
06 Mar	LUXOR (SAFAGA)	07:00	☾
07 Mar	LUXOR (SAFAGA)		17:00
08 Mar	AIN SUKHNA	08:00	20:00
09 Mar	TRANSITING THE SUEZ CANAL		
10 Mar	JERUSALEM (ASHDOD)	08:00	23:00
11 Mar	NAZARETH (HAIFA)	08:00	23:00
12 Mar	DAY AT SEA		
13 Mar	RHODES	08:00	20:00
14 Mar	KUSADASI	08:00	23:00
15 Mar	DAY AT SEA		
16 Mar	ISTANBUL	07:00	☾
CHAPTER 5			
17 Mar	ISTANBUL		23:00
18 Mar	DAY AT SEA		
19 Mar	THESSALONIKI	08:00	19:00
20 Mar	VOLOS	07:30	19:00
21 Mar	NAFLION	12:00	23:00
22 Mar	DAY AT SEA		
23 Mar	SIRACUSA	08:00	☾
24 Mar	SIRACUSA		13:00
25 Mar	NAPLES	08:00	☾
CHAPTER 6			
26 Mar	NAPLES		19:00
27 Mar	DAY AT SEA		

28 Mar	DAY AT SEA		
29 Mar	MÁLAGA	08:00	☾
30 Mar	MÁLAGA		18:00
31 Mar	CÁDIZ	08:00	☾
01 Apr	CÁDIZ		14:00
02 Apr	LISBON	08:00	☾
CHAPTER 7			
03 Apr	LISBON		17:00
04 Apr	DAY AT SEA		
05 Apr	BILBAO	09:00	23:00
06 Apr	BORDEAUX	15:45	☾
07 Apr	BORDEAUX		☾
08 Apr	BORDEAUX		17:00
09 Apr	DAY AT SEA		
10 Apr	SAINT-MALO	08:00	23:00
11 Apr	ST PETER PORT	08:00	18:00
12 Apr	SOUTHAMPTON (LONDON)	07:00	
CHAPTER 8			
12 Apr	SOUTHAMPTON (LONDON)		19:00
13 Apr	ROUEN	15:45	☾
14 Apr	ROUEN		☾
15 Apr	ROUEN		19:15
16 Apr	DAY AT SEA		
17 Apr	AMSTERDAM	08:00	☾
18 Apr	AMSTERDAM		23:59
19 Apr	DAY AT SEA		
20 Apr	HAMBURG	08:00	☾
21 Apr	HAMBURG		18:00
22 Apr	DAY AT SEA		
23 Apr	COPENHAGEN	08:00	☾
24 Apr	COPENHAGEN		18:00
25 Apr	DAY AT SEA		
26 Apr	HELSINKI	08:00	23:00
27 Apr	TALLINN	08:00	☾
28 Apr	TALLINN		17:00
29 Apr	STOCKHOLM	08:00	☾
CHAPTER 9			
30 Apr	STOCKHOLM		18:00
01 May	DAY AT SEA		
02 May	DAY AT SEA		

03 May	OSLO	08:00	☾
04 May	OSLO		23:00
05 May	DAY AT SEA		
06 May	BERGEN	08:00	23:00
07 May	DAY AT SEA		
08 May	TÓRSHAVN	08:00	18:00
09 May	DAY AT SEA		
10 May	AKUREYRI	08:00	18:00
11 May	ISAFJORDUR	08:00	18:00
12 May	REYKJAVIK	08:00	☾
CHAPTER 10			
13 May	REYKJAVIK		18:00
14 May	DAY AT SEA		
15 May	DAY AT SEA		
16 May	QAQORTOQ	08:00	17:00
17 May	NUUK	13:30	☾
18 May	NUUK		18:00
19 May	DAY AT SEA		
20 May	DAY AT SEA		
21 May	ST JOHN'S	13:00	☾
22 May	ST JOHN'S		18:00
23 May	DAY AT SEA		
24 May	HALIFAX	08:00	23:00
25 May	DAY AT SEA		
26 May	BOSTON	07:00	☾
27 May	BOSTON		18:00
28 May	DAY AT SEA		
29 May	NEW YORK	07:00	

☾ Overnight in Port



BENEFITS & INCLUSIONS
EXCLUSIVE TO WORLD CRUISE GUESTS

PRIVATE EXECUTIVE TRANSFERS BETWEEN HOME, AIRPORT AND SHIP¹

PERSONALISED JOURNEY TO TOKYO IN BUSINESS CLASS AIR
(FROM SELECTED COUNTRIES/GATEWAYS)

MEET & GREET²

BON VOYAGE RECEPTION, DINNER
AND OVERNIGHT ACCOMMODATION PRE-EMBARKATION

SHORE EXCURSIONS (ONE PER PORT, PER DAY)

\$1,000 ONBOARD SPENDING CREDIT PER GUEST (UP TO \$2,000 PER SUITE)

EXCLUSIVE WORLD CRUISE EVENTS

SPECIAL COMMEMORATIVE GIFTS

ONE OTIVM SPA TREATMENT PER GUEST

SILVER SHORE BAGGAGE VALET (UP TO 2 BAGS, 50LBS EACH, PER GUEST)

LAUNDRY SERVICE

UNLIMITED WI-FI

MEDICAL SERVICE³

VISA PACKAGE⁴

1 - Up to 50 miles per transfer | 2 - At selected airports of departure | 3 - Medical Service includes: visits to the Ship Medical Center, medical services typically provided for which we normally charge a fee, any medical tests administered onboard and medications prescribed by our onboard doctor to treat an ailment. We will not include refills on any prescription drugs, the cost of transferring a guest to land based facility for treatment, medical evacuations, or any other costs incurred off the ship | 4 - For USA, Canada, UK, Germany, Australia only



CONTROTEMPO AND SILVER DAWN

An exceptional flagship for an exceptional world cruise

Our 2025 World Cruise, *Controtempo*, will be the very first world cruise onboard our magnificent flagship, *Silver Dawn*.

A new world of luxury, she has a thoroughly modern design that brings together classic elements, a timeless feel and a larger variety of spaces, suites, and venues.

As we'll be sailing for 136 days on *Controtempo*, you'll have all the time in the world to appreciate *Silver Dawn*'s all-inclusive all-suite lifestyle, with a wider choice of accommodation, and more space in your suite and all around the ship. Large enough for eight separate dining venues – including those that make up our Sea And Land Taste culinary program – she's intimate enough to feature our legendary onboard ambience and personalised service.

All this choice and variety enables a broader and richer onboard experience, perfectly suited to *Controtempo*, a world cruise that sails to a wealth of incredible destinations and features a large variety of regions, cultures and experiences.

Welcome onboard.



A WORLD OF GOURMET OPTIONS

Silver Dawn's eight gourmet dining venues feature a kaleidoscope of cuisines, from Japanese to French to Italian and more. With a wider choice of options than ever before, you'll always have a great experience, whether you're looking for some elegant fine dining or something a little less formal. *Bon appétit!*



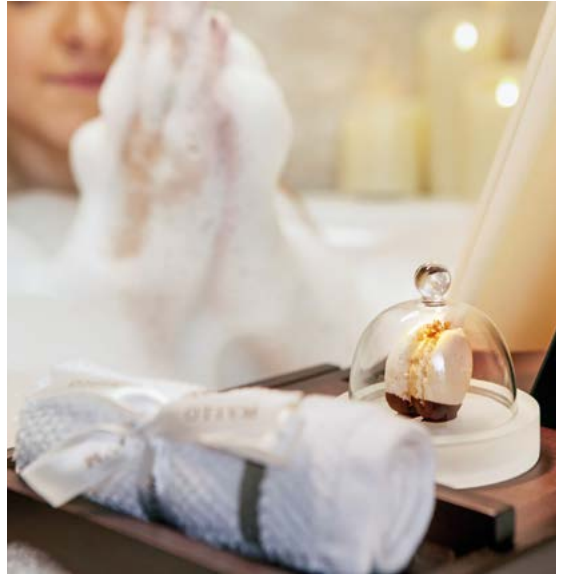
TIME TO TAKE A BREAK

Taking time out is an important part of our *Controtempo* world cruise. Sit back, relax, and enjoy a sip of your favourite cocktail – mixed exactly how you like it by our baristas, without even having to ask them – in one of *Silver Dawn's* many venues, from Connoisseur's Corner to Dolce Vita to Arts Café and more.



WELCOME TO OTIVM

Onboard *Silver Dawn*, you'll be pampered by our brand new indulgent wellness programme, Otium, available for the first time on a World Cruise. A celebration of our Mediterranean heritage, it was inspired by the baths of ancient Rome, places of leisure to relax, socialise, bathe, eat, drink and enjoy life. From treatments in our new Otium spa to indulgent experiences right in your suite, you may find yourself wanting to stay at sea just a little bit longer.





SEA AND LAND TASTE

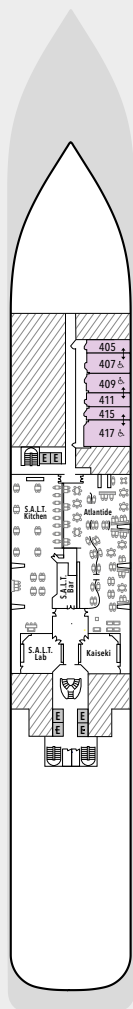
Discover a world of flavour onboard and onshore

On *Controtempo*, *Silver Dawn* features our unique culinary programme, S.A.L.T., where you'll take the time for an in-depth exploration of trendy and timeless gourmet treasures throughout our voyage. This includes a deep dive into "the fifth taste", *umami*, in Japan, and a look at how the art of fermentation has influenced traditional and New Nordic cuisine across all of Scandinavia throughout history.

You'll be able to enjoy S.A.L.T. at a number venues, including S.A.L.T. Kitchen, our dedicated dining venue that brings the flavours of the world to your table, S.A.L.T. Bar, where you'll taste regionally inspired cocktails made with locally sourced quality beverages and ingredients, and prepared by master mixologists, and S.A.L.T. Lab, an interactive venue where you can recreate all the fantastic dishes you encounter on shore.

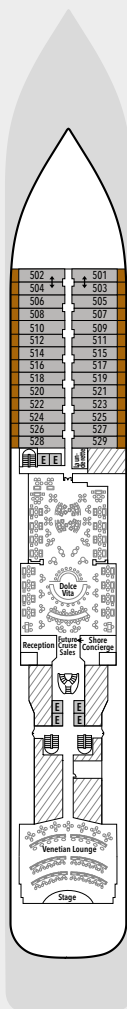


SILVER DAWN – DECK PLANS



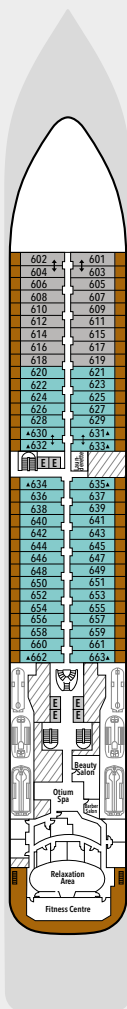
DECK 4

Atlantide
Kaiseki
S.A.L.T. Kitchen
S.A.L.T. Bar
S.A.L.T. Lab



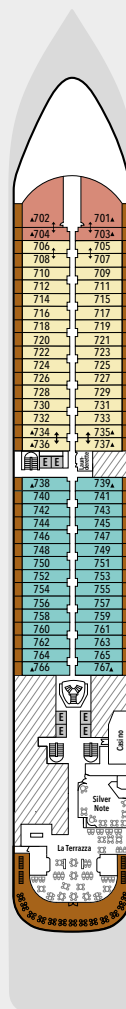
DECK 5

Reception/
Guest Relations
Shore Concierge
Dolce Vita
Venetian Lounge
Future Cruise Sales



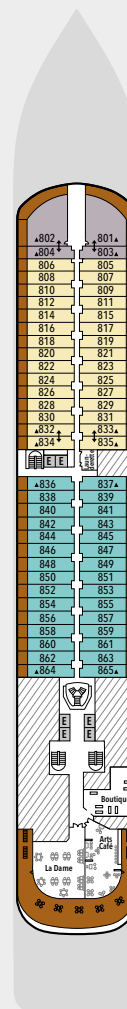
DECK 6

Otium Spa
Fitness Centre



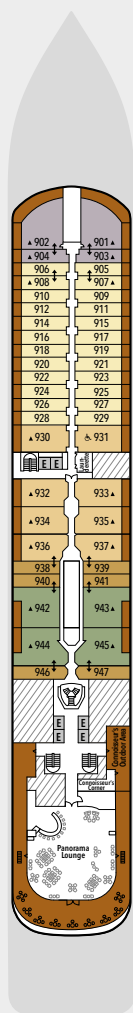
DECK 7

La Terrazza
Silver Note
Casino

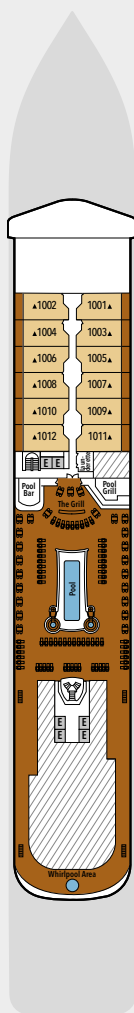


DECK 8

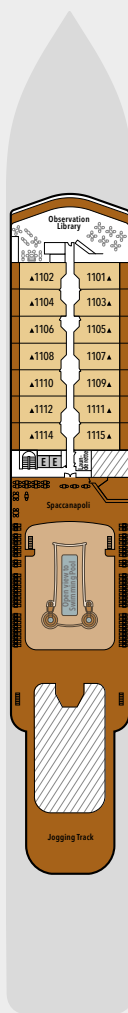
Arts Café
Boutique
La Dame



DECK 9
Panorama Lounge
Connoisseur's Corner



DECK 10
Pool Deck
Pool Bar
The Grill
Whirlpool Area



DECK 11
Observation Library
Spaccanapoli
Jogging Track

SUITE CATEGORIES

Owner's Suite
Grand Suite
Royal Suite
Silver Suite
Deluxe Veranda Suite
Superior Veranda Suite
Classic Veranda Suite
Panorama Suite
Vista Suite



SPECIFICATIONS

Crew	411
Officers	International
Guests	596
Tonnage	40,700
Length	698 Feet / 212.8 Metres
Width	86 Feet / 27 Metres
Speed	19.8 Knots
Passenger Decks	8
3rd Guest Capacity	▲
Connecting Suites	↕
Wheelchair Accessible Suites	♿
Built	2021
Registry	Bahamas

Deck plans are for illustration purposes only
and may be subject to change.

SILVER DAWN SUITES

Suite diagrams shown are for illustration purposes only and may vary from actual square footage. Please refer to suite specifications for square footage.

ALL SUITES FEATURE:

BUTLER SERVICE

REFRIGERATOR AND BAR SETUP
STOCKED WITH YOUR PREFERENCES

PLUSH BATHROBES

PILLOW MENU

LUXURY BATH AMENITIES

COMPLIMENTARY WIFI FOR ALL SUITES

PERSONALISED STATIONERY

UMBRELLA

HAIR DRYER

WALL MOUNTED USB-C MOBILE
DEVICE CHARGERS

DIRECT-DIAL TELEPHONE(S)

CHAMPAGNE ON ARRIVAL



OWNER'S SUITE

Available as a one-bedroom configuration or as a two-bedroom by adjoining with a Panorama suite (as illustrated).

ONE BEDROOM: 947-1055 SQ FT / 88-98 M²

INCLUDING VERANDA (129 SQ FT / 12 M²)

TWO BEDROOM: 1281-1389 SQ FT / 119-129 M²

INCLUDING VERANDA (129 SQ FT / 12 M²)

- Large veranda with patio furniture and floor-to-ceiling glass doors; bedroom two has additional large picture window
- Living room with sitting area; bedroom two has additional sitting area
- Separate dining area
- Twin beds or king-sized bed; bedroom two has additional twin beds or queen-sized bed
- Marble bathroom with double vanity, separate shower and full-sized bath, plus a powder room; bedroom two has additional marble bathroom with shower
- Custom-made luxury bed mattresses
- Walk-in wardrobe(s) with personal safe
- Vanity table(s)
- Writing desk(s)
- One 55" / 140 cm and one 40" / 102 cm flat-screen HDTVs in main suite, plus one 40" / 102 cm flat-screen HDTV in bedroom two
- Interactive Media Library
- Sound system with Bluetooth connectivity
- Illy® espresso machine
- Unlimited Premium Wifi





GRAND SUITE

Available as a one-bedroom configuration or as a two-bedroom by adjoining with a Veranda Suite (as illustrated).

DECK 8: ONE BEDROOM: 1572 SQ FT / 146 M² INCLUDING VERANDA (570 SQ FT / 53 M²); **TWO BEDROOM:** 1970 SQ FT / 183 M² INCLUDING VERANDA (635 SQ FT / 59 M²)
DECK 9: ONE BEDROOM: 1472 SQ FT / 137 M² INCLUDING VERANDA (474 SQ FT / 44 M²); **TWO BEDROOM:** 1873 SQ FT / 174 M² INCLUDING VERANDA (538 SQ FT / 50 M²)

- Two verandas with patio furniture and floor-to-ceiling glass doors; bedroom two has additional veranda
- Living room with convertible sofa to accommodate an additional guest
- Sitting area; bedroom two has additional sitting area
- Separate dining area
- Twin beds or king-sized bed; bedroom two has additional twin beds or queen-sized bed
- Marble bathroom with double vanity, separate shower and full-sized bath, plus a powder room; bedroom two has additional marble bathroom with full-sized bath
- Custom-made luxury bed mattresses
- Walk-in wardrobe(s) with personal safe
- Vanity table(s)
- Writing desk(s)
- One 55" / 140 cm and one 40" / 102 cm flat-screen HD TVs in main suite, plus one 40" / 102 cm flat-screen HD TV in bedroom two
- Interactive Media Library
- Sound system with Bluetooth connectivity
- Illy® espresso machine
- Unlimited Premium Wifi



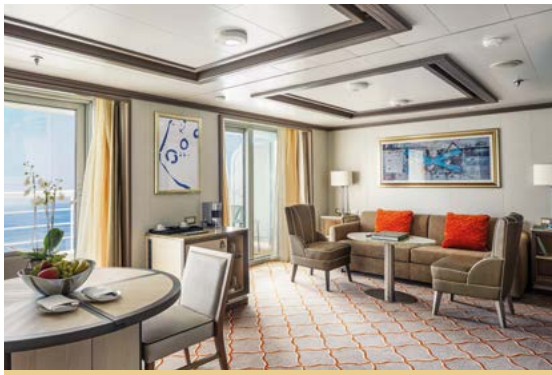
ROYAL SUITE

Available as a one-bedroom configuration or as a two-bedroom by adjoining with a Veranda suite (as illustrated).

ONE BEDROOM: 1130 SQ FT / 105 M² INCLUDING VERANDA (129 SQ FT / 12 M²)
TWO BEDROOM: 1528 SQ FT / 142 M² INCLUDING VERANDA (194 SQ FT / 18 M²)

- Large veranda with patio furniture and floor-to-ceiling glass doors; bedroom two has additional veranda
- Living room with convertible sofa to accommodate an additional guest
- Sitting area; bedroom two has additional sitting area
- Separate dining area
- Twin beds or king-sized bed; bedroom two has additional twin beds or queen-sized bed
- Marble bathroom with double vanity, separate shower and full-sized bath, plus a powder room; bedroom two has additional marble bathroom with full-sized bath
- Custom-made luxury bed mattresses
- Walk-in wardrobe(s) with personal safe
- Vanity table(s)
- Writing desk(s)
- One 55" / 140 cm and one 40" / 102 cm flat-screen HD TVs in main suite, plus one 40" / 102 cm flat-screen HD TV in bedroom two
- Interactive Media Library
- Sound system with Bluetooth connectivity
- Illy® espresso machine
- Unlimited Premium Wifi





SILVER SUITE

Available as a one-bedroom configuration or as a two-bedroom by adjoining with a Panorama suite (as illustrated). One suite available as a wheelchair accessible suite.

ONE BEDROOM: 786 SQ FT / 73 M²
INCLUDING VERANDA (129 SQ FT / 12 M²)
TWO BEDROOM: 1119 SQ FT / 104 M²
INCLUDING VERANDA (129 SQ FT / 12 M²)

- Veranda with patio furniture and floor-to-ceiling glass doors
- Living room with convertible sofa to accommodate an additional guest
- Sitting area
- Separate dining area
- Twin beds or king-sized bed
- Marble bathroom with double vanity, full-sized bath, separate shower; bedroom two has additional marble bathroom with full-sized bath
- Wheelchair accessible suite has a marble bathroom with vanity and separate shower (no full-sized bath as illustrated)
- Walk-in wardrobe with personal safe
- Vanity table
- Writing desk
- One 55" / 140 cm and one 40" / 102 cm flat-screen HD TVs in main suite; plus one 40" / 102 cm flat-screen HD TV in bedroom two
- Interactive Media Library
- Sound system with Bluetooth connectivity
- Illy® espresso machine
- Unlimited Premium Wifi



DELUXE VERANDA SUITE / SUPERIOR VERANDA SUITE / CLASSIC VERANDA SUITE

Some Veranda Suites accommodate three guests. Deluxe Verandas offer preferred central location with identical accommodations to Classic and Superior Verandas.

387 SQ FT / 36 M²
INCLUDING VERANDA (64 SQ FT / 6 M²)

- Veranda with patio furniture and floor-to-ceiling glass doors
- Sitting area
- Twin beds or queen-sized bed
- Marble bathroom with vanity, full-sized bath, separate shower
- Walk-in wardrobe with personal safe
- Writing desk
- One 40" / 102 cm flat-screen HD TV
- Interactive Media Library
- Unlimited Standard Wifi



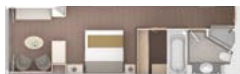


PANORAMA SUITE

Available as a one bedroom configuration.

334 SQ FT / 31 M² – DECK 9

- Sitting area
- Twin beds or queen-sized bed
- Marble bathroom with vanity, full-sized bath, separate shower
- Walk-in wardrobe with personal safe
- Writing desk
- One 40" / 102 cm flat-screen HD TV
- Interactive Media Library
- Unlimited Standard Wifi



VISTA SUITE

Some Vista Suites are available as a wheelchair accessible suite*.

334 SQ FT / 31 M² – DECK 4
WHEELCHAIR ACCESSIBLE SUITE: 440-646 SQ FT / 41-60 M²

- Sitting area
- Twin beds or queen-sized bed
- Marble bathroom with vanity, full-sized bath, separate shower
- Wheelchair accessible suite has a marble bathroom with vanity and separate shower (no full-sized bath)
- Walk-in wardrobe with personal safe; wheelchair accessible suites fitted with cupboards and wardrobe with personal safe
- Writing desk
- One 40" / 102 cm flat-screen HD TV
- Interactive Media Library
- Unlimited Standard Wifi



* Wheelchair accessible suite does not include full-sized bath

All images in this brochure are intended as a general reference. Ship features, materials, finishes and layout may differ from those shown in this brochure.

Visit silversea.com/terms-and-conditions for the full Terms and Conditions or contact our Reservation Team or your Travel Advisor

FOR RESERVATIONS PLEASE CONTACT YOUR TRAVEL ADVISOR

